



@oneillinvestments



No Mountain To High For Our Tenants



## UP TO 2 BEDROOMS ●

- 4. 278 Camden Road
- 5. 14 Belmont Street
- 6. 276 Camden Road

## UP TO 3 BEDROOMS ●

- 7. 121 Camden Mews
- 8. 268 Camden Road
- 8. 268 Camden Road
- 9. 278 Camden Road
- 9. 278 Camden Road
- 10. 17 Regent's Park Road
- 11. 119 Camden Mews
- 12. 14 Belmont Street

## UP TO 4 BEDROOMS ●

- 13. 117 Camden Mews
- 14. 268 Camden Road
- 15. 17 Regent's Park Rd

## UP TO 5 BEDROOMS ●

- 16. 123 Camden Mews
- 17. 125 Camden Mews
- 18. 270 Camden Road
- 19. 270 Camden Road
- 20. 274 Camden Road
- 21. 276 Camden Road
- 22. 62 King's Cross Rd



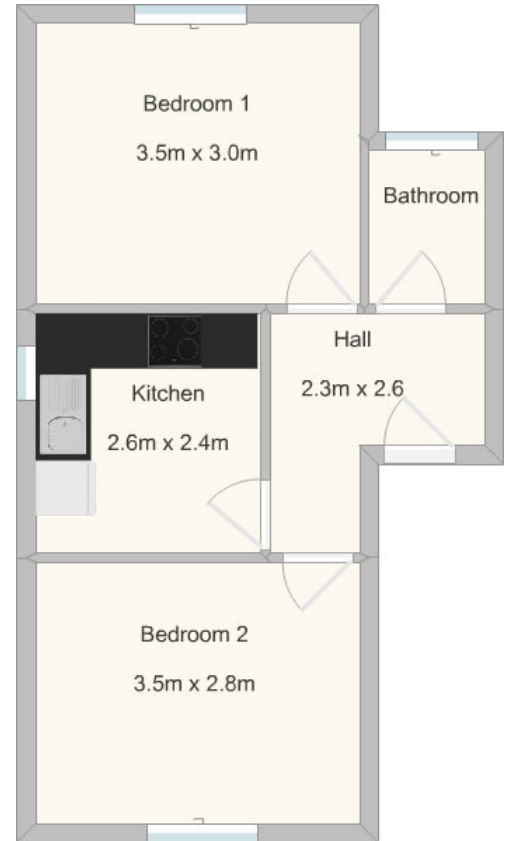
THE BEST landlords in London. O'Neills are THE BEST landlords in London--hands down. I think the fountain of positive reviews here speaks for itself!

5/5!  
Always ready to help you!

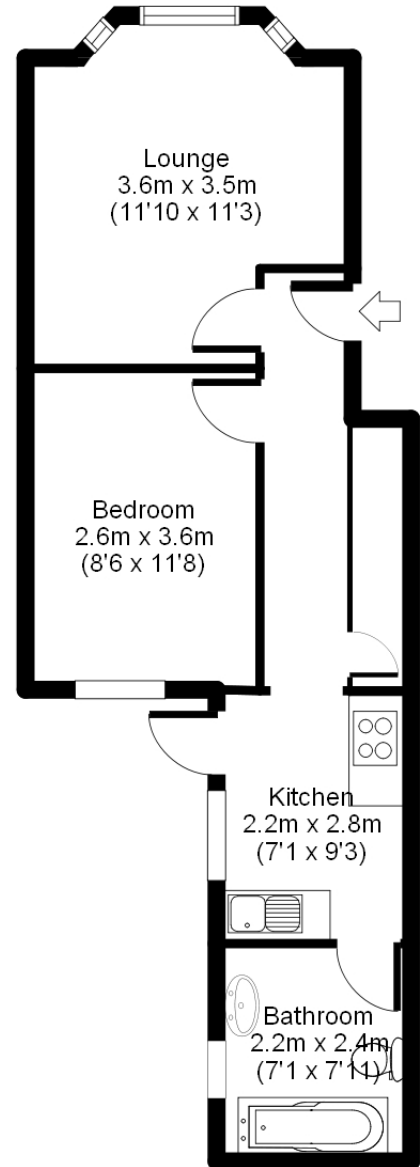
O'Neills are a fantastic landlord company and allow you to rent, settle and live at ease in London. I have stayed in one of their flats for over 5 years and would rent with them again should a suitable property become available. The problem is that they are such a good landlord that they rarely have free flats!



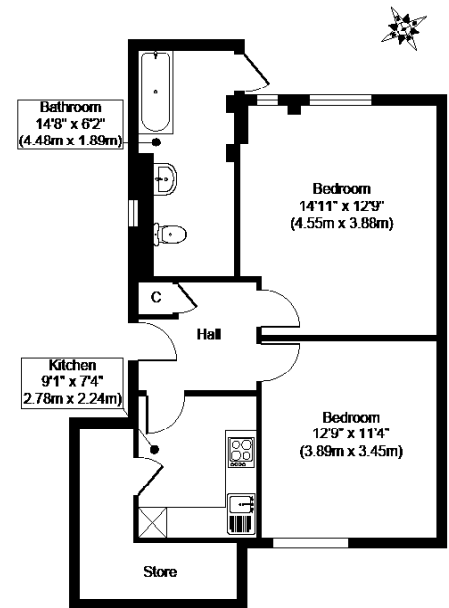
# 278 Camden Road NW1 9AB



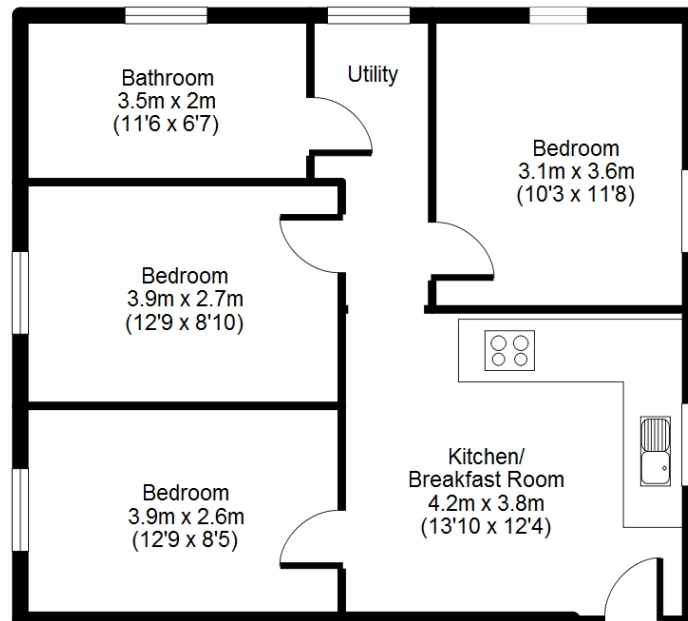
# 14 Belmont Street NW1 8HH



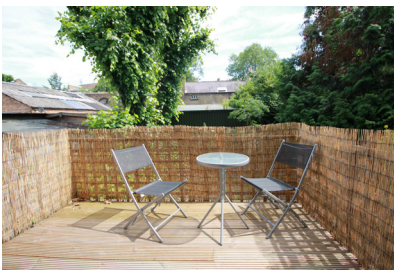
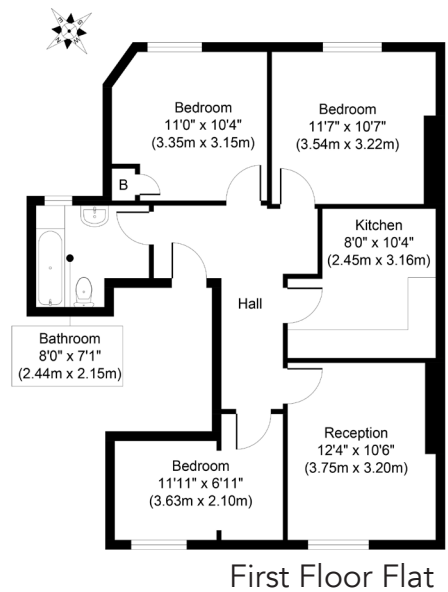
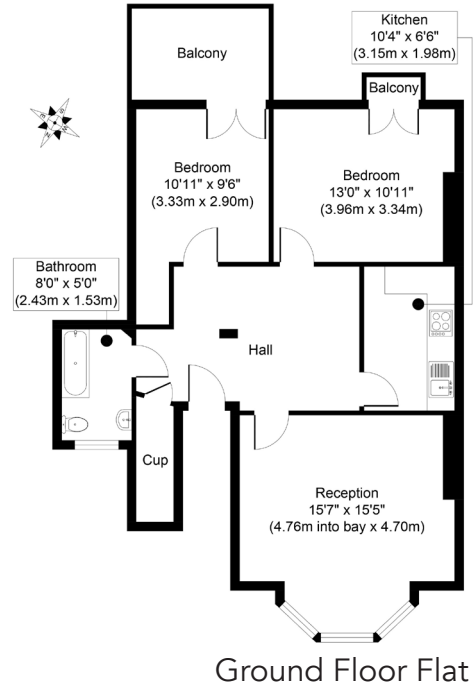
# 276 Camden Road NW1 9AB



# 121 Camden Mews NW1 9AH

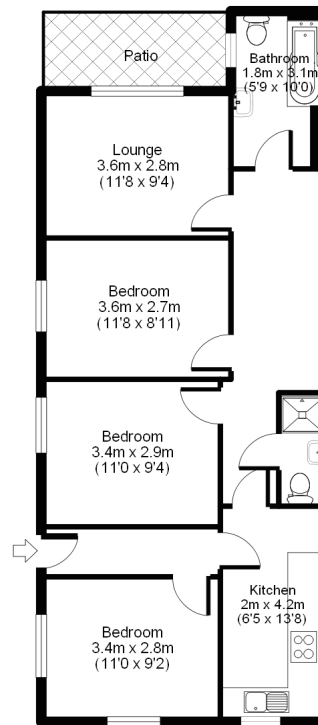


# 268 Camden Road NW1 9AB

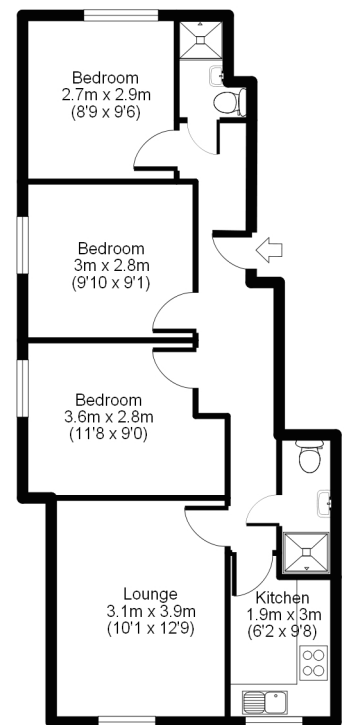




# 278 Camden Road NW1 9AB

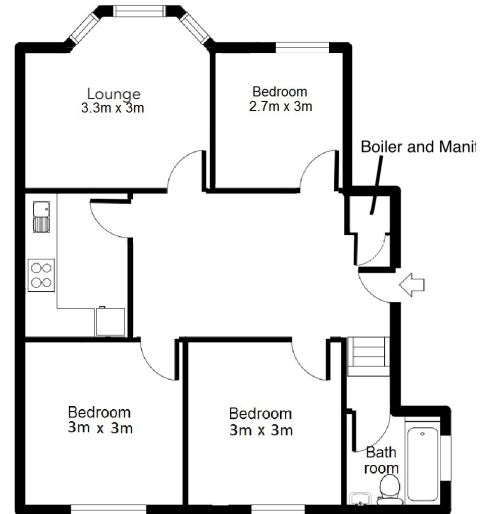


Lower Ground Floor Flat

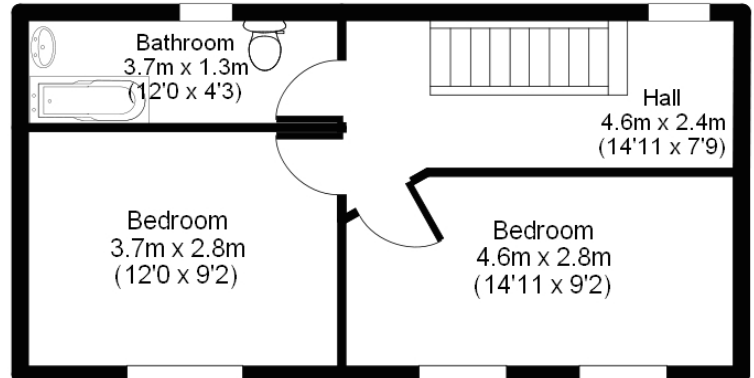
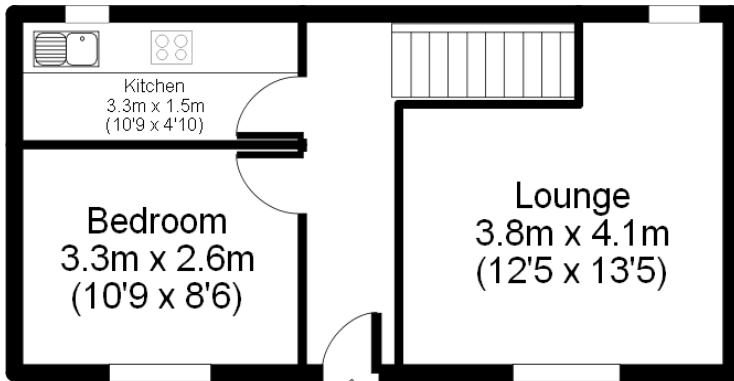


Upper Ground Floor Flat

# 17 Regent's Park Road NW1 7TL

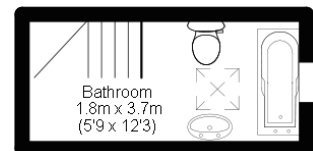
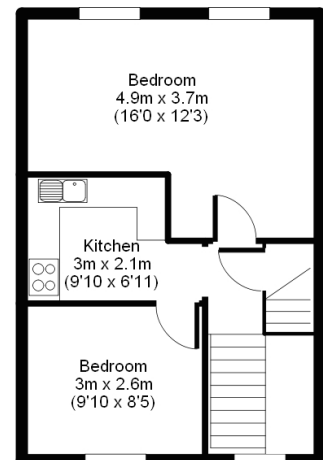
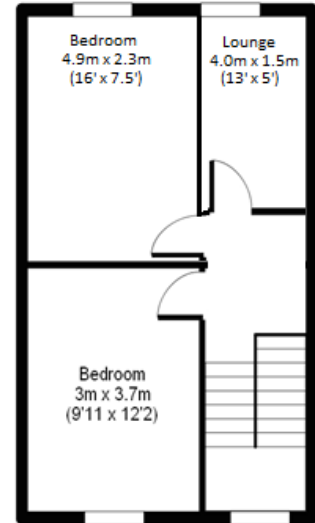


# 119 Camden Mews NW1 9AH

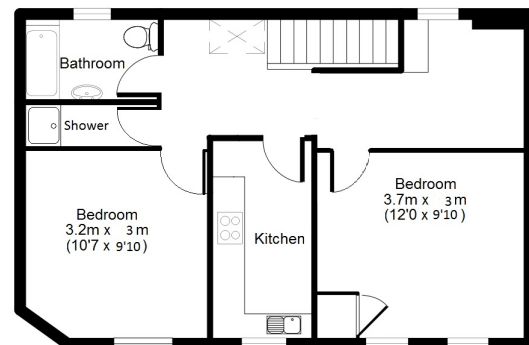
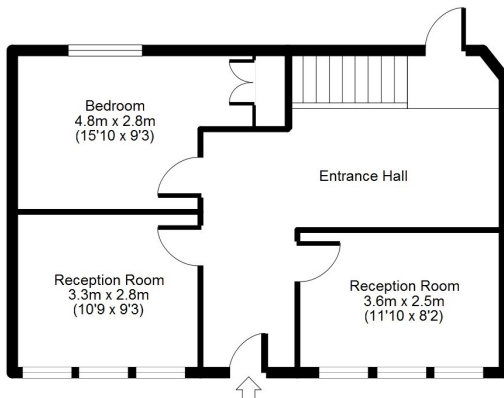


\* Conservatory not on floorplan

# 14 Belmont Street NW1 8HH

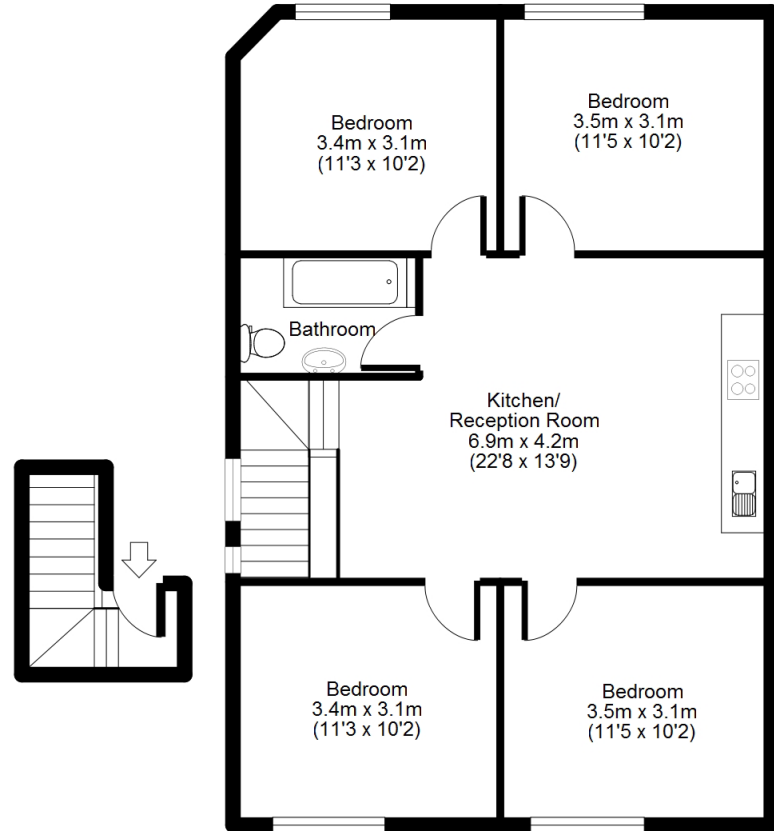


# 117 Camden Mews NW1 9AH



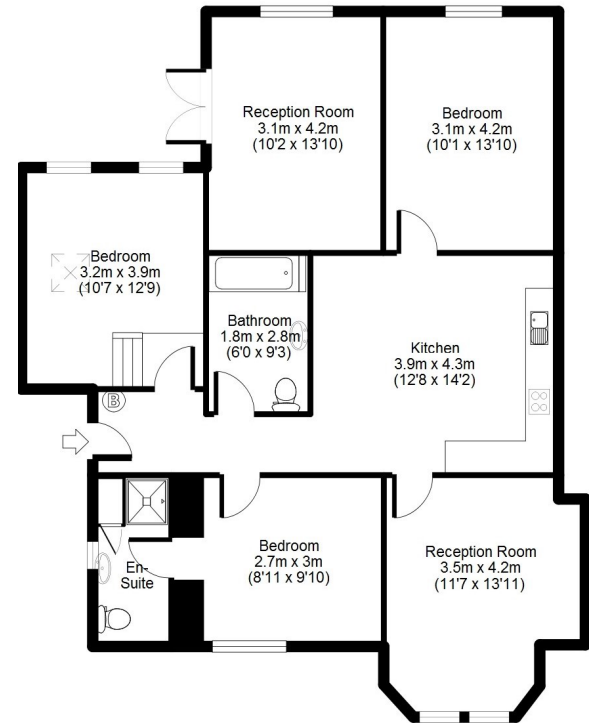
\* Garden not on floor plan.

# 268 Camden Road NW1 9AB



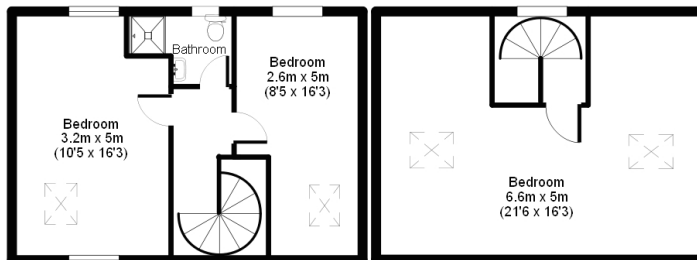
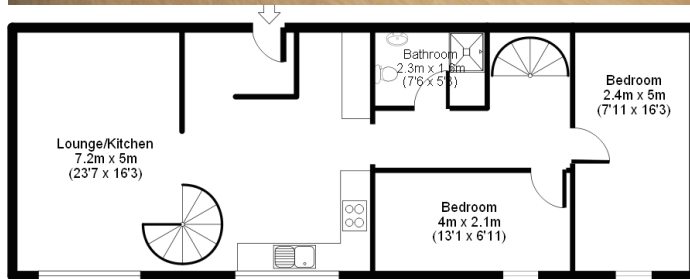
Top Floor Flat

# 17 Regent's Park Road NW1 7TL



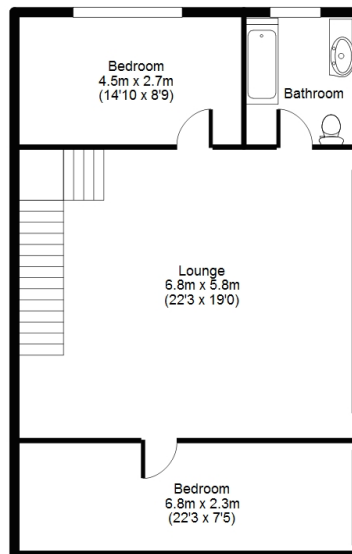
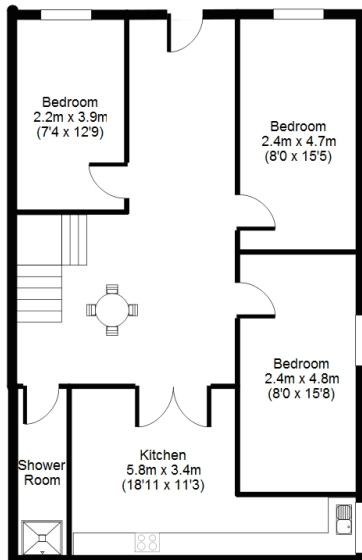
\* Garden not on floor plan.

# 123 Camden Mews NW1 9AH





# 125 Camden Mews NW1 9AH



\* Garden not on floor plan.



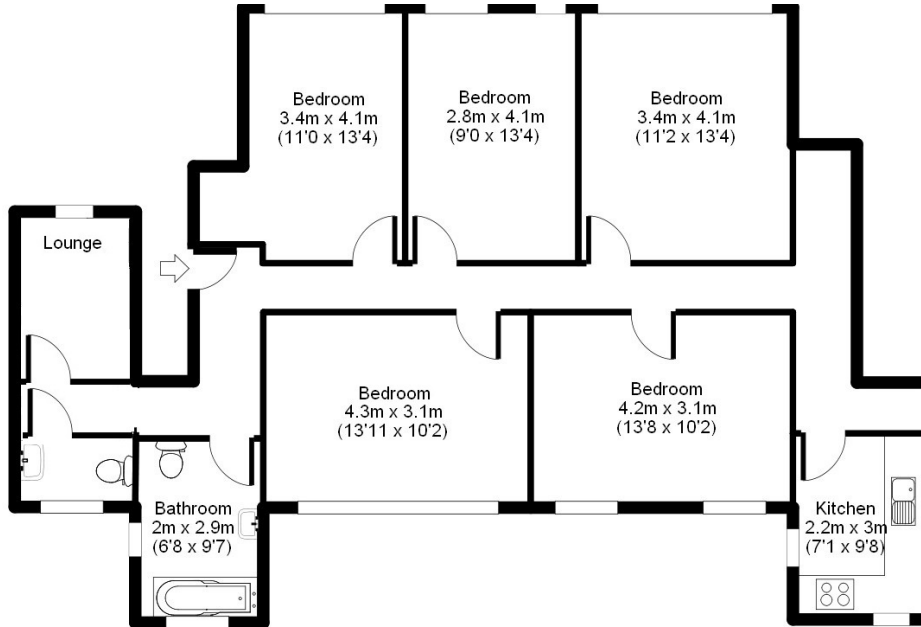
Flats to Rent  
Direct from Landlord

Neill

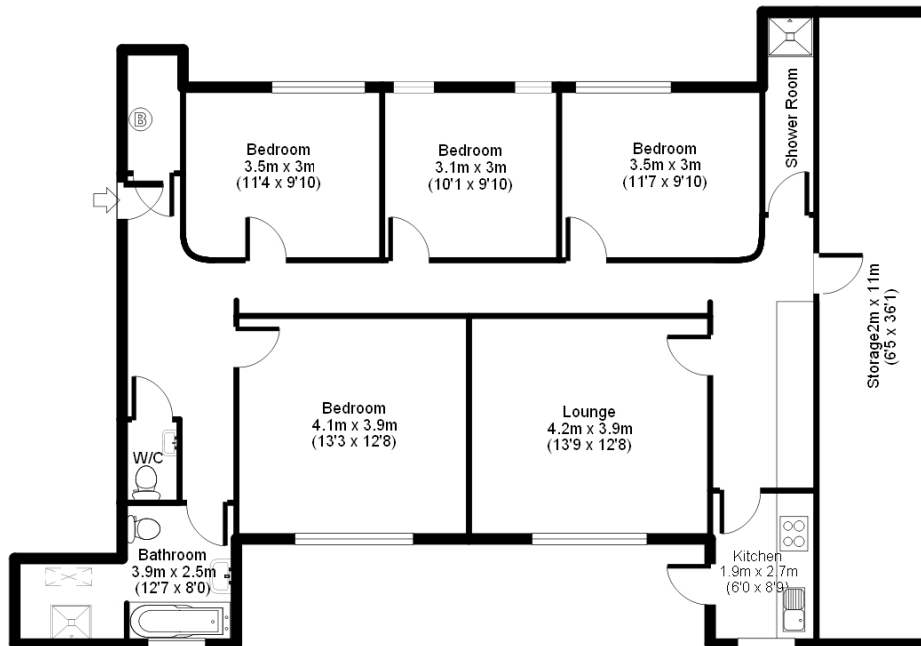
oneillinvestments.com  
0208 449 4044

# 270 Camden Road NW1 9AB

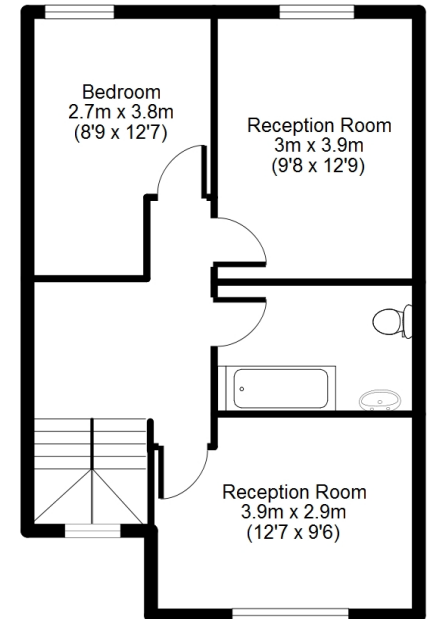
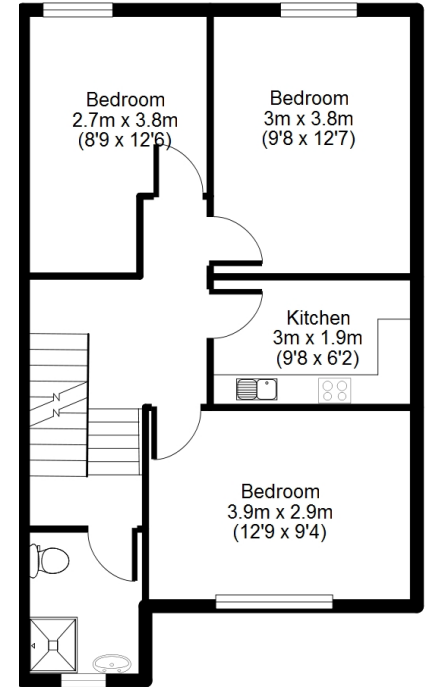
Ground floor flat



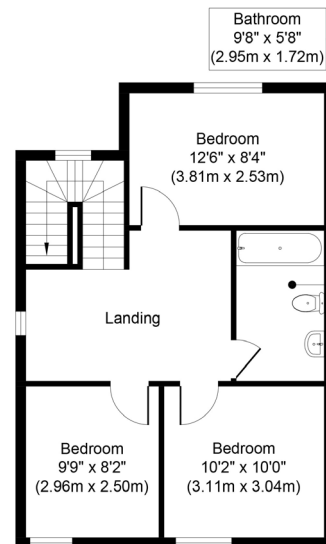
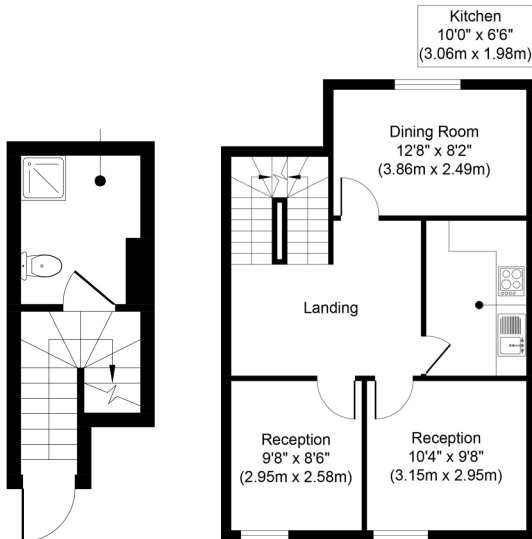
Basement flat



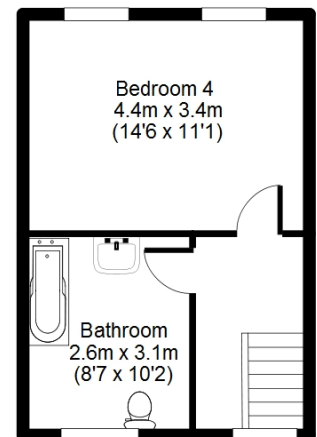
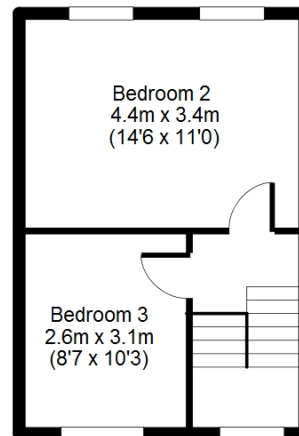
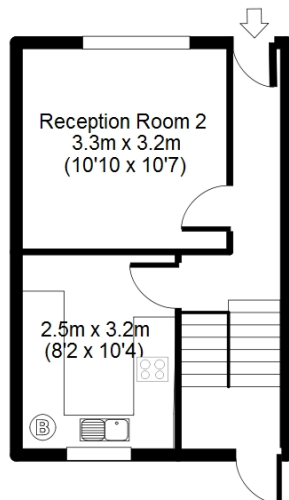
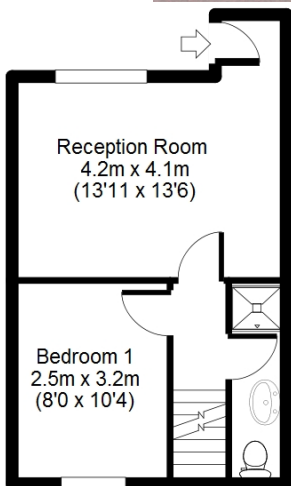
# 274 Camden Road NW1 9AB



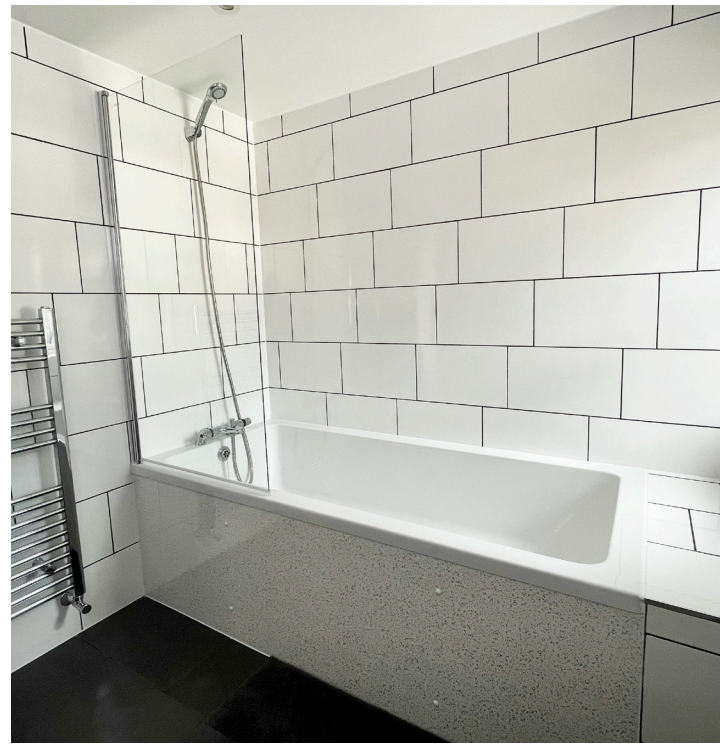
# 276 Camden Road NW1 9AB



# 62 King's Cross Road WC1X 9QE



\* Garden not on floor plan.





[www.oneillinvestments.co.uk](http://www.oneillinvestments.co.uk)  
[property@oneillinvestments.co.uk](mailto:property@oneillinvestments.co.uk)



tel: 07525233981  
tel: 02084494044