

The logo features the name 'O'Neill' in a white, elegant script font, centered within a large red circle. The background is composed of four triangular sections meeting at the center: orange at the top, light blue on the left, light green on the right, and light yellow at the bottom.

O'Neill



socials: @oneillinvestments
email: property@oneillinvestments.co.uk



No Mountain To High For Our Tenants



UP TO 2 BEDROOMS



- 4. 278 Camden Road
- 5. 276 Camden Road

UP TO 3 BEDROOMS



- 6. 121 Camden Mews
- 7. 268 Camden Road
- 7. 268 Camden Road
- 8. 278 Camden Road
- 8. 278 Camden Road
- 9. 119 Camden Mews

UP TO 4 BEDROOMS



- 10. 117 Camden Mews
- 11. 268 Camden Road

UP TO 5 BEDROOMS



- 12. 123 Camden Mews
- 13. 125 Camden Mews
- 14. 270 Camden Road
- 14. 270 Camden Road
- 15. 274 Camden Road
- 16. 276 Camden Road



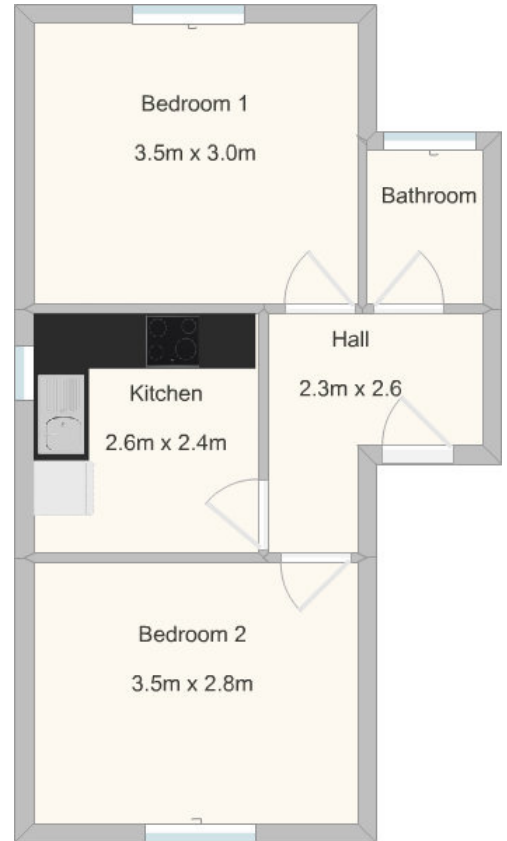
THE BEST landlords in London. O'Neills are THE BEST landlords in London--hands down. I think the fountain of positive reviews here speaks for itself!

5/5!
Always ready to help you!

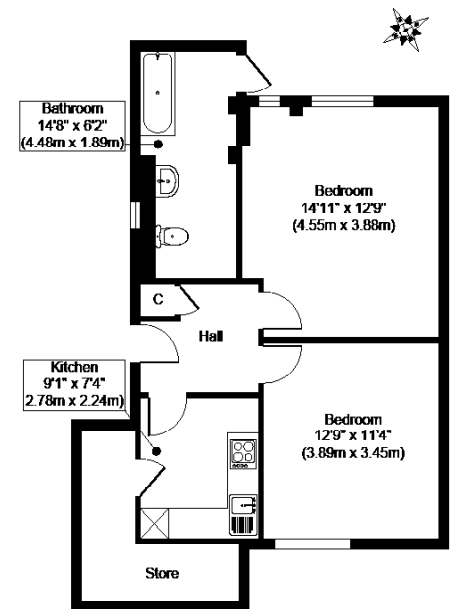
O'Neills are a fantastic landlord company and allow you to rent, settle and live at ease in London. I have stayed in one of their flats for over 5 years and would rent with them again should a suitable property become available. The problem is that they are such a good landlord that they rarely have free flats!



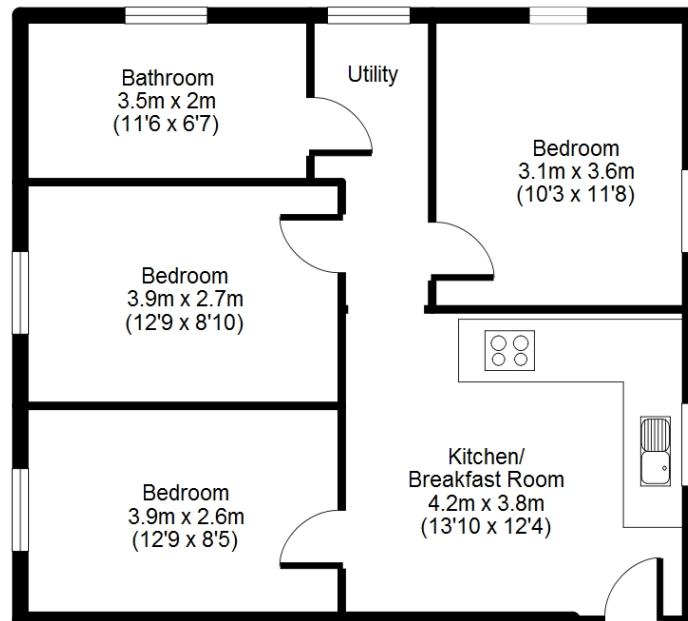
278 Camden Road NW1 9AB



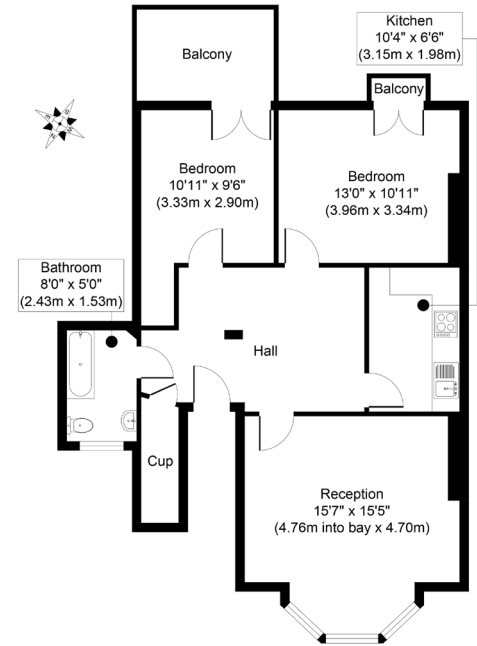
276 Camden Road NW1 9AB



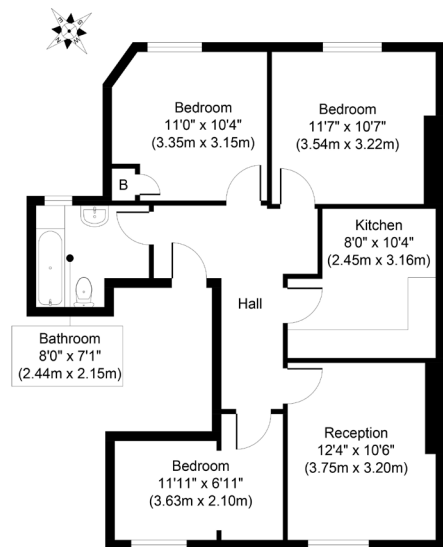
121 Camden Mews NW1 9AH



268 Camden Road NW1 9AB



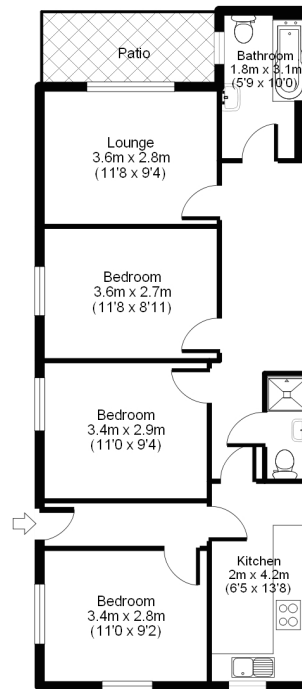
Ground Floor Flat



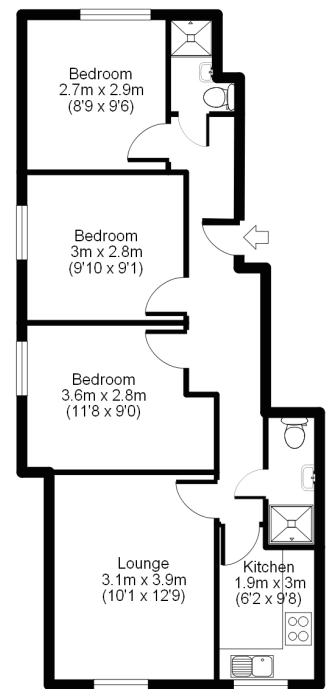
First Floor Flat



278 Camden Road NW1 9AB

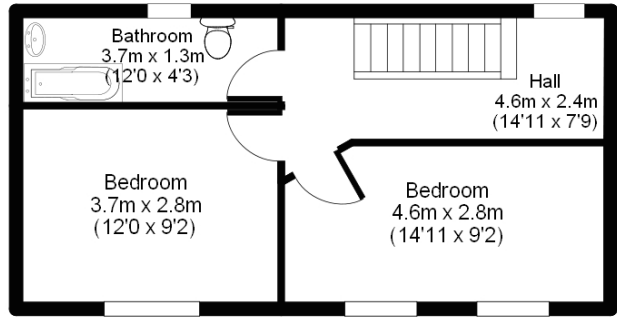
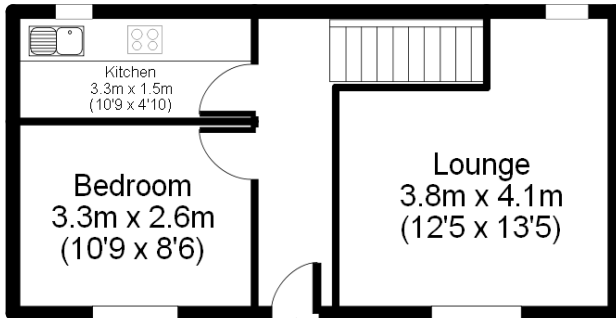


Lower Ground Floor Flat



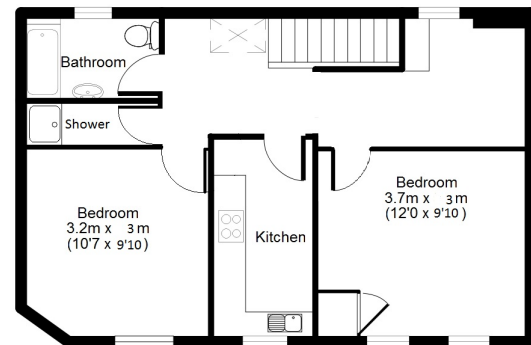
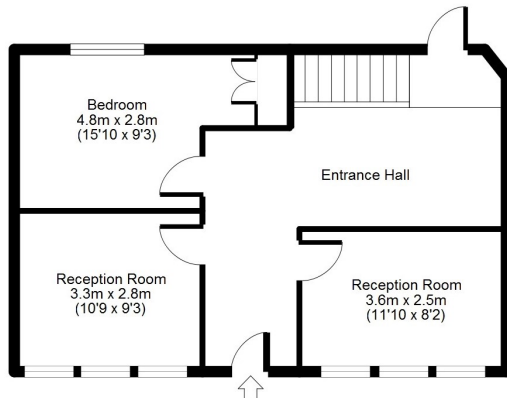
Upper Ground Floor Flat

119 Camden Mews NW1 9AH



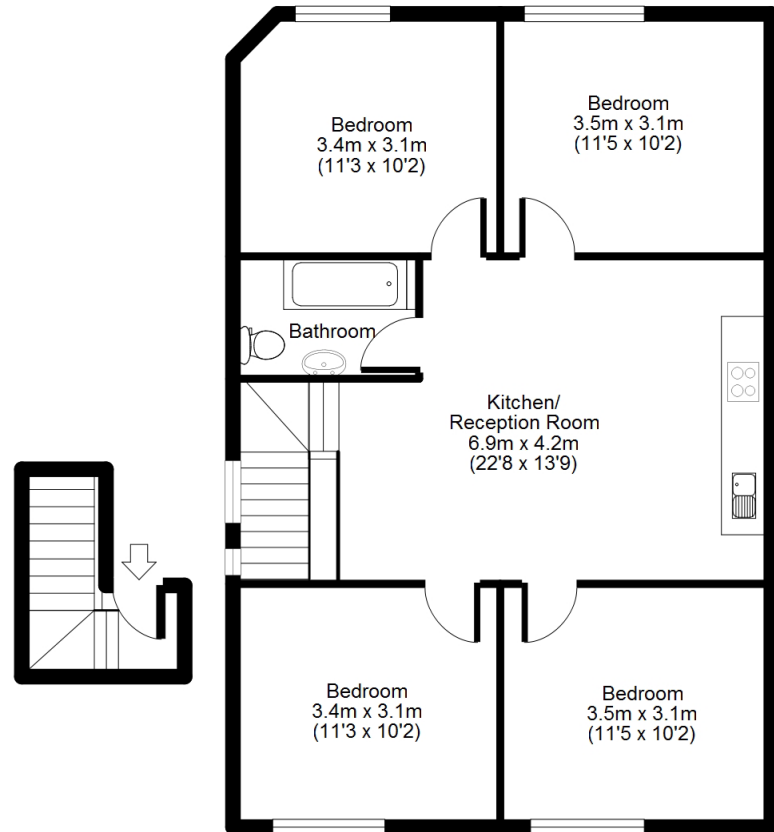
* Conservatory not on floorplan

117 Camden Mews NW1 9AH



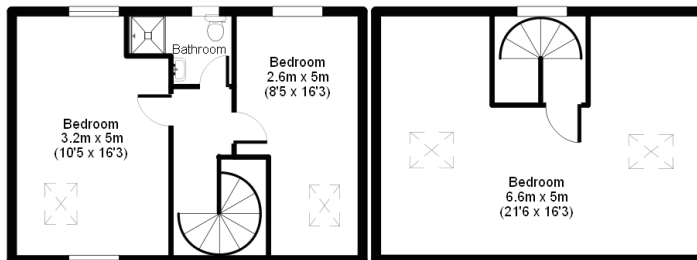
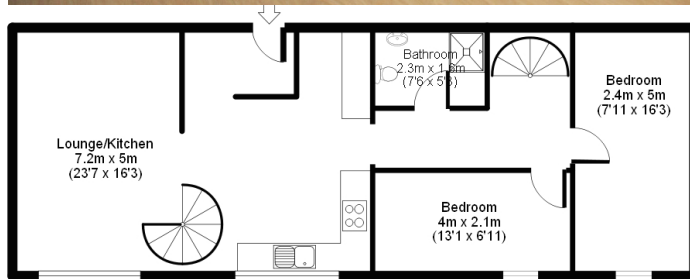
* Garden not on floor plan.

268 Camden Road NW1 9AB

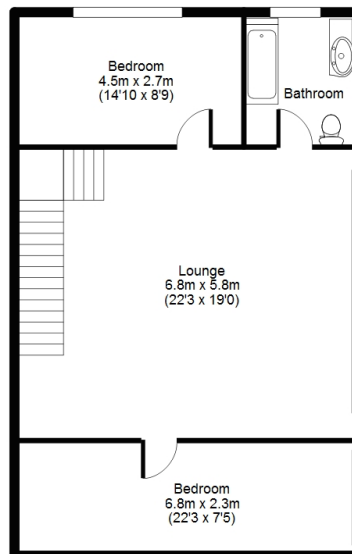
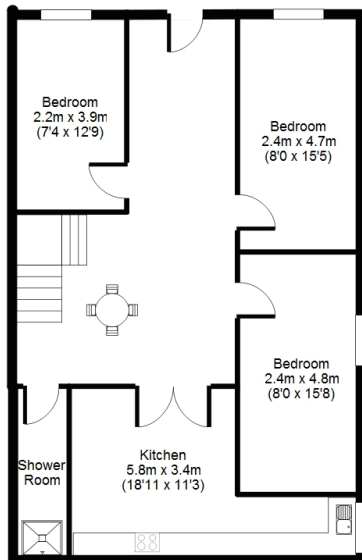


Top Floor Flat

123 Camden Mews NW1 9AH



125 Camden Mews NW1 9AH



* Garden not on floor plan.





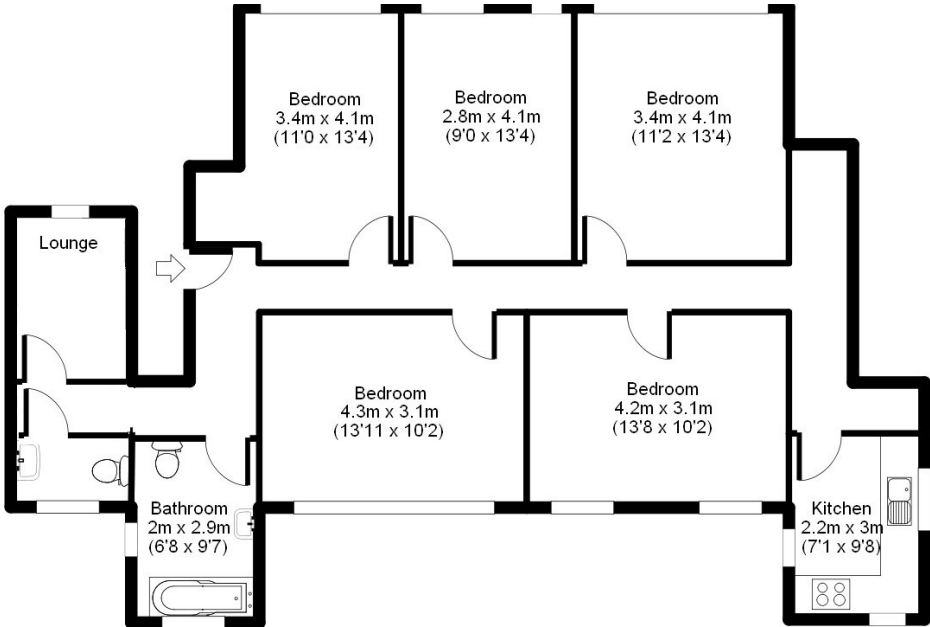
Flats to Rent
Direct from Landlord

Neill

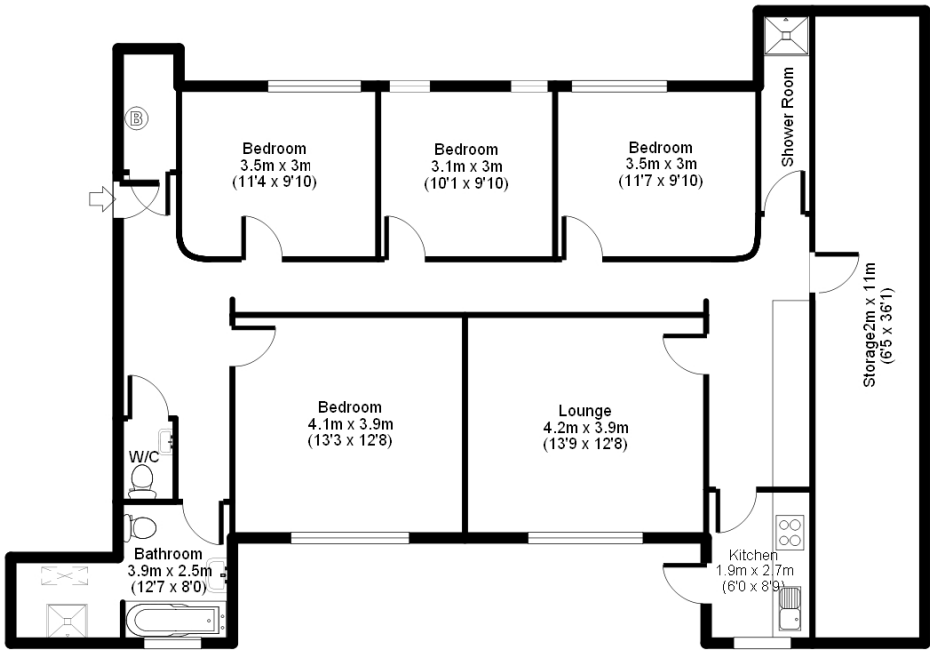
oneillinvestments.com
0208 449 4044

270 Camden Road NW1 9AB

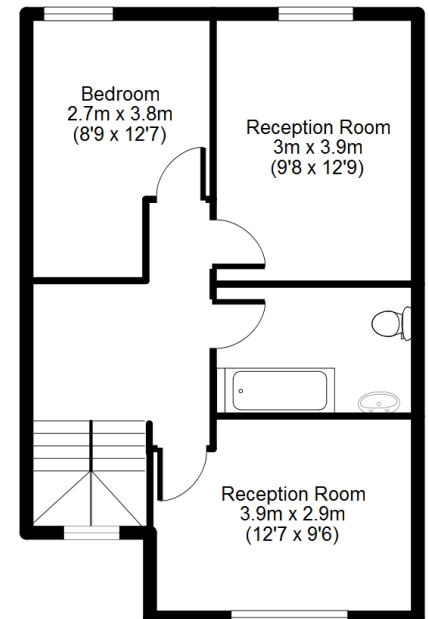
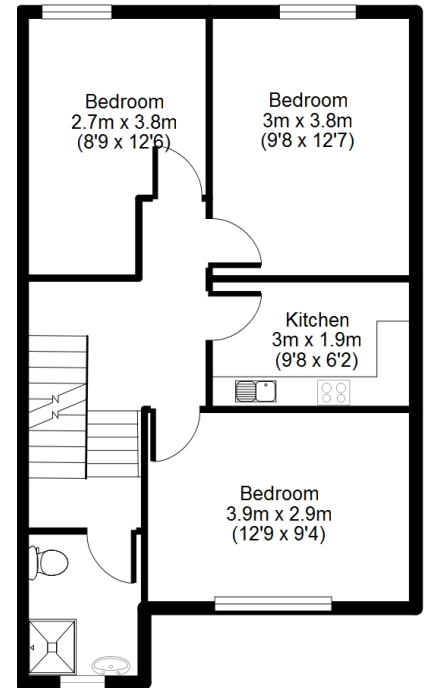
Ground floor flat



Basement flat



274 Camden Road NW1 9AB



276 Camden Road NW1 9AB

